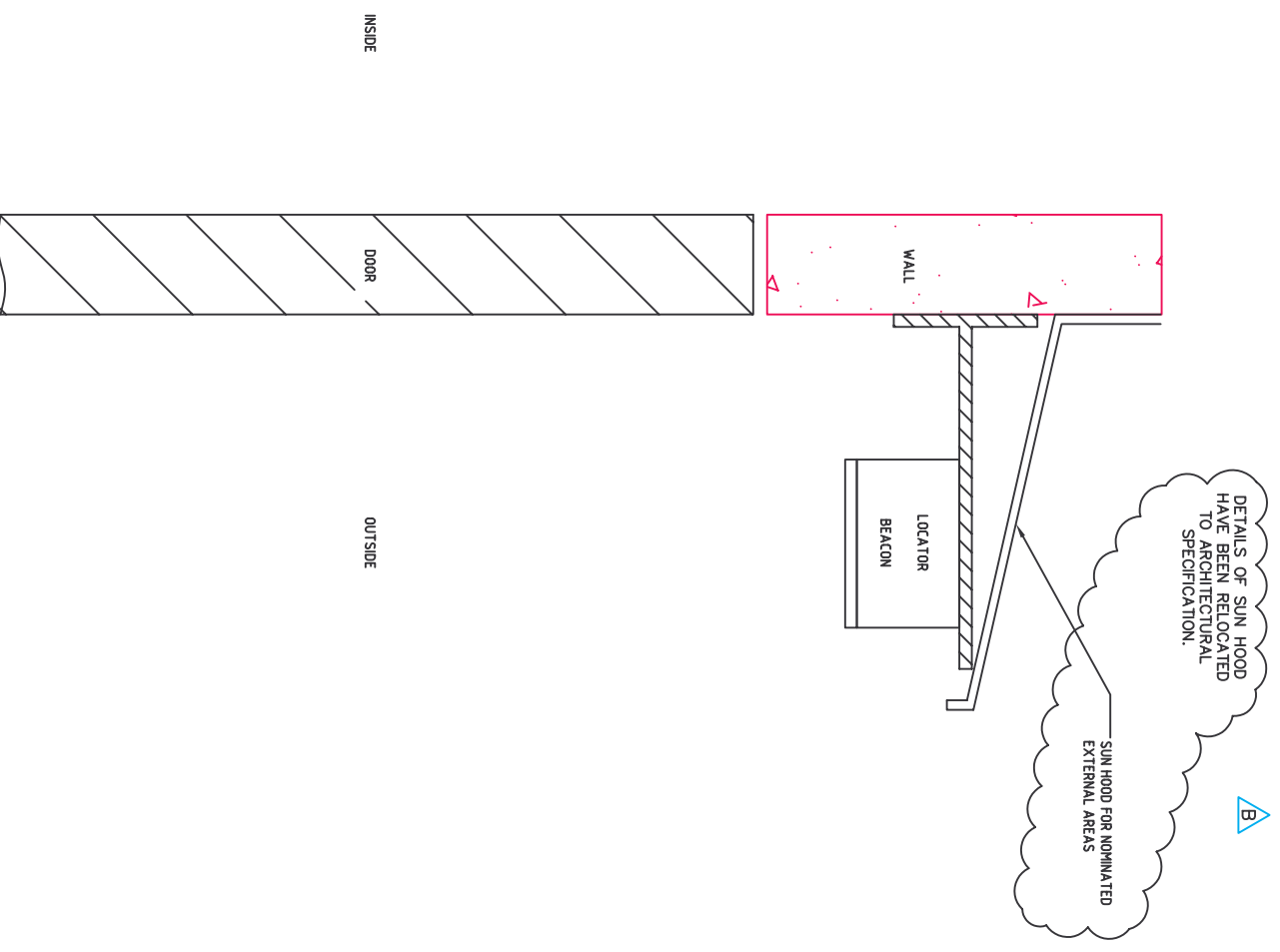
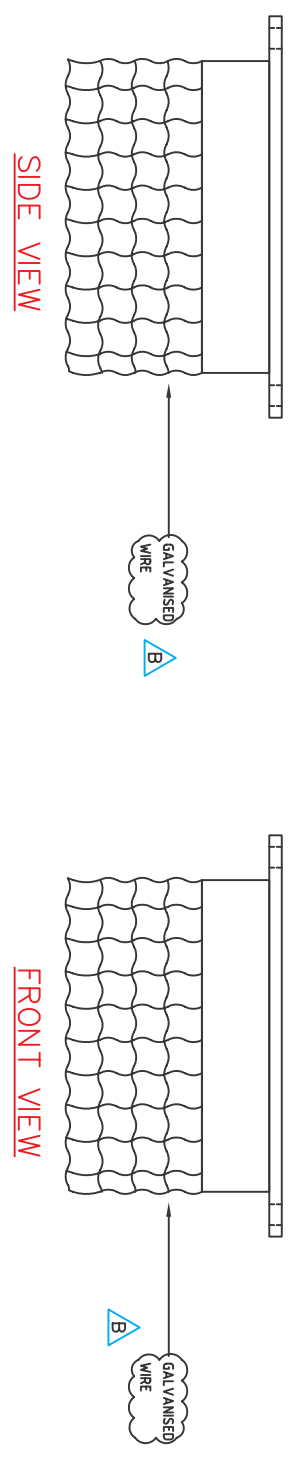


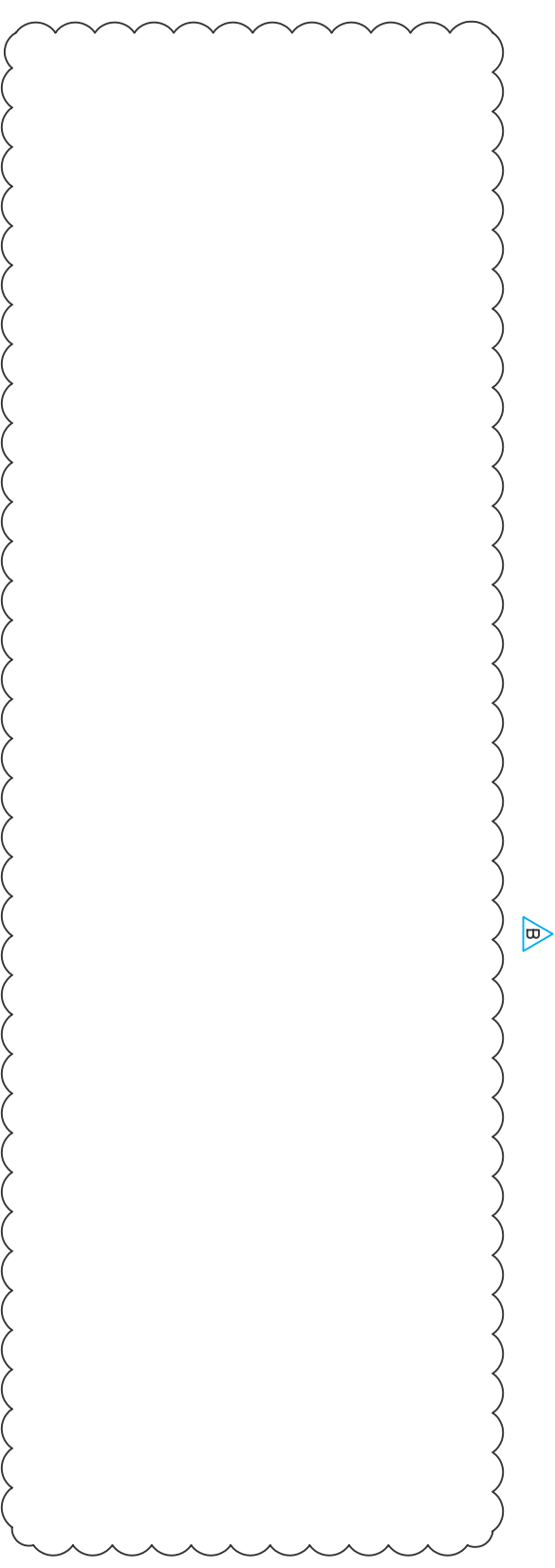
AMD	SUBJECT	INT	DATE
001	ISSUE 3	H.V	18.04.24
A	NO AMENDMENTS	H.V	18.02.24
B	CONSTRUCTION ISSUE	H.V	24.03.25
	ADDED NOTES		
	REVISED MOUNTING DETAIL		



**TYPICAL MOUNTING ARRANGEMENT
FOR EXTERNAL DOORS OR DOORS WITH
HIGH CEILINGS**



**LOCATOR BEACON
PROTECTIVE CAGE**



ARCHITECT: Pilliga Smith Connell Architects
CLIENT: QLD
STRUCTURAL ENGINEER: Cordia Alexander Brown
FIRE ENGINEER: NBY
METEOROLOGICAL ENGINEER: Heston Australia Group
GLAZING ENGINEER: Heston Australia Group
ACOUSTIC ENGINEER: Hyder Acoustics P/L
FOOD & BEV: Genies Restaurant
LANDSCAPE: Genies Restaurant

**CHRISTMAS ISLAND
IRPC**
 for
**DEPARTMENT OF
FINANCE AND ADMINISTRATION**

**PHILLIPS
SMITH
CONSWELL**
ARCHITECTS
 ACN: 009 866 862 **PTY LTD**
 60 BERNIX STREET PO BOX 476
 FORTITUDE VALLEY QLD 4005
 PH: 07 3251187 FAX: 07 3251197

ISSUE
N.T.S at A1
N.T.S at A3
PROJECT CONSULTANT
4881
XS1022 B

