

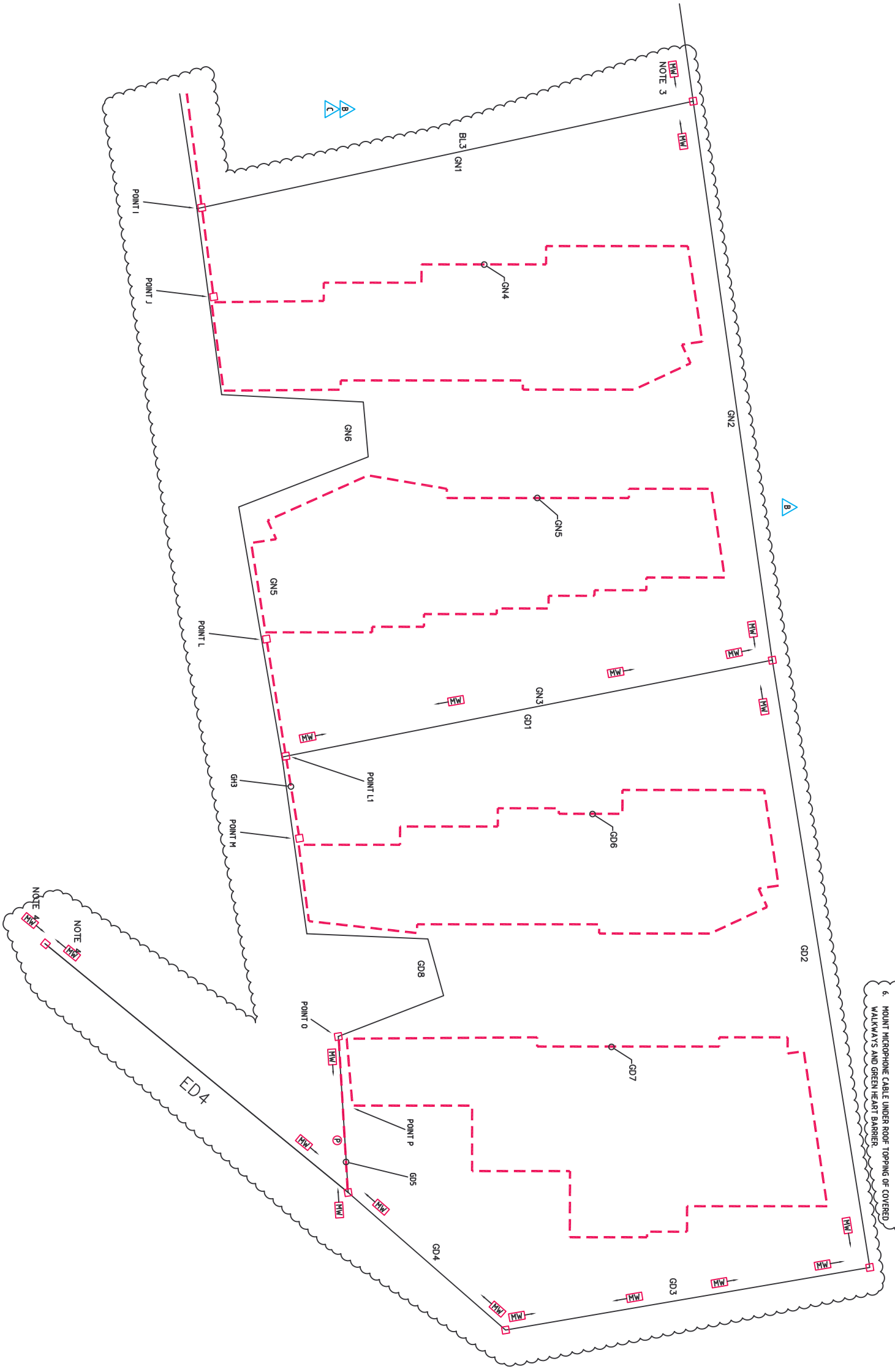
AMD SUBJECT	INT DATE	INT DATE
GD1 PORTAL REVISION	N/A	24.03.18
GD2 PORTAL REVISION	N/A	24.03.18
B FOUNDATION ISSUE	N/A	07/02/25
B CABLE & REVISION	N/A	07/02/25
C CONSTRUCTION ISSUE	N/A	24.03.18
C REVISION MICROWAVE	N/A	NOTE 2-4 ADDED

NOTES

- EQUIPMENT LOCATIONS ARE INDICATIVE ONLY. REFER TO THE SPECIFICATION THE CIVIL DRAWINGS AND THE ARCHITECTURAL IN CONJUNCTION WITH THIS DRAWING TO DETERMINE FINAL LOCATIONS. FINAL LOCATIONS MAY BE SUBJECT TO APPROVAL PRIOR TO INSTALLATION.
- READ THIS DRAWING IN CONJUNCTION WITH XS1002.
- ALSO SHOWN ON XS1006.
- ALSO SHOWN ON XS1004.
- PROVIDE TRENCHING, CONDUITS AND CABLES TO FIELD CUBICLES FROM MICROWAVE UNITS.
- MOUNT MICROPHONE CABLE UNDER ROOF TOPPING OF COVERED WALKWAYS AND GREEN HEART BARRIER.

LEGEND:

- INDICATES END OF A ZONE/SECTOR
- - - INDICATES MICROPHONIC CABLE



PROJECT: Phillipa Smith Council Architects
CIVIL: GD1
STRUCTURAL: Gordon Alexander Brown
MECHANICAL/ELECTRICAL: Gordon Alexander Brown
LANDSCAPE: Gordon Alexander Brown
ARCHITECTURE: Phillipa Smith Council Architects
PROJECT: 4681
CONSULTANT: PHILLIPS SMITH CONWELL

CHRISTMAS ISLAND
IRPC
DEPARTMENT OF FINANCE AND ADMINISTRATION

PHILLIPS SMITH CONWELL ARCHITECTS
 A.C.N. 009 866 862 **PTY LTD**
 60 BERNICK STREET PO BOX 405
 FORTITUDE VALLEY QD 4005
 PH. 07 35271167 FAX. 07 35271197

MICROWAVE & MICROPHONIC DETAIL
 GN, GD, Z12
 SCALE: N.T.S.
 PROJECT: 4681
 DRAWING No. XS1005
 REVISION: C